

What's the _____ ? It's ...



00:00 = midnight

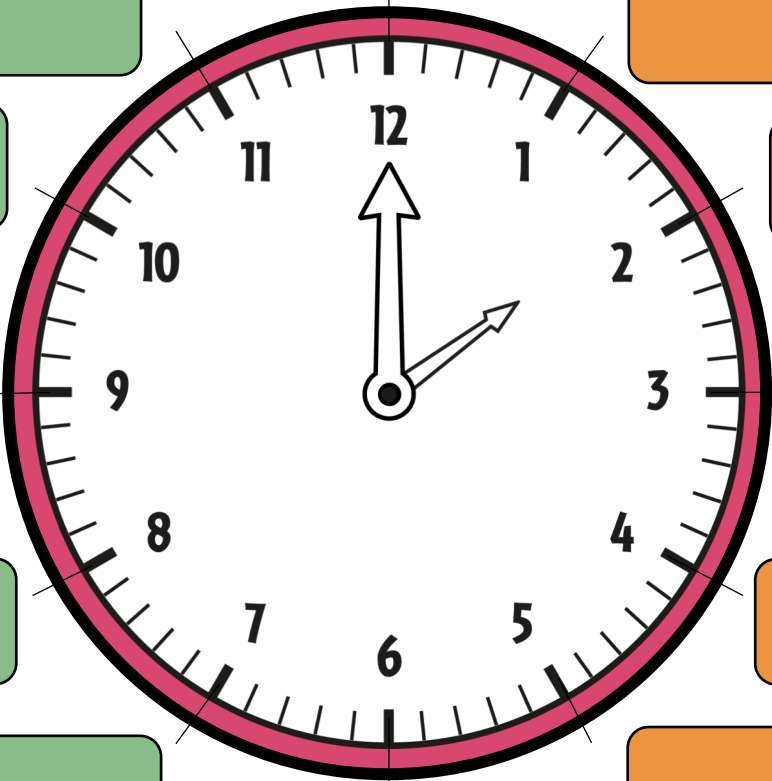


12:00 = midday



PM = midday - midnight

AM = midnight - midday



Wir verwenden **AT + TIME**,
wenn wir von einem bestimmten
Zeitpunkt sprechen.

The class starts at 8 o'clock.
I play football at half past three.

Wir verwenden **IT IS** oder **IT'S**,
wenn wir die Frage:
"What's the time?" beantworten.

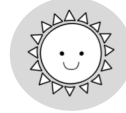
Paul: What's the time?
Anna: It's two o'clock.



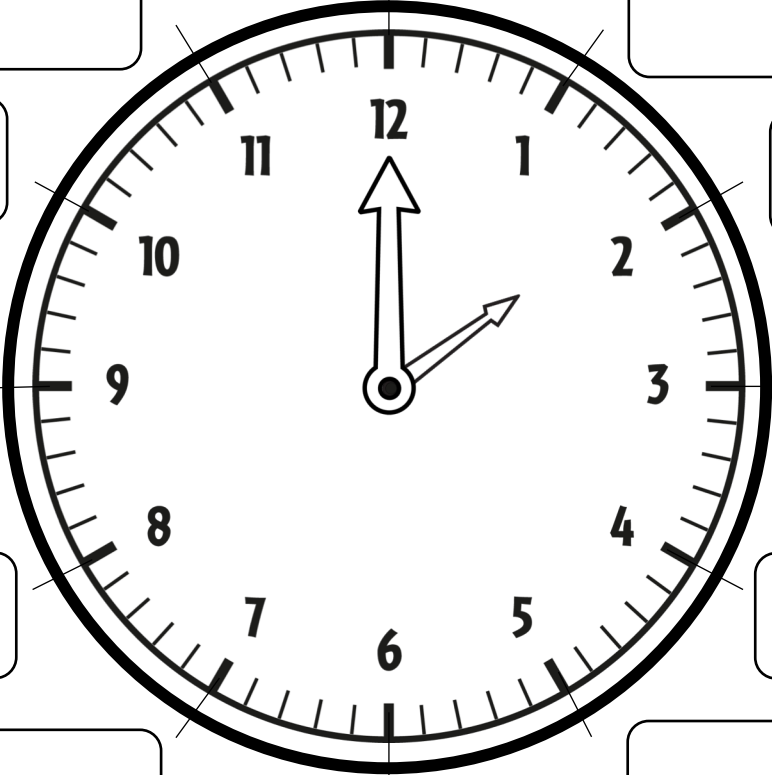
What's the _____ ? It's ...



00:00 = *midnight*



12:00 = *midday*



PM = *midday - midnight*

AM = *midnight - midday*

Wir verwenden **AT + TIME**,
wenn wir von einem bestimmten
Zeitpunkt sprechen.

The class starts at 8 o'clock.
I play football at half past three.

Wir verwenden **IT IS** oder **IT'S**,
wenn wir die Frage:
"What's the time?" beantworten.

Paul: What's the time?
Anna: It's two o'clock.